

Transition Couplings



PVC Schedule 40 & 80 Slip to Liquidtite



Transitions in One Minute

Save Cost on the Rigid Nipple, Tape & Labor

Use for Entire Job - Not Just for Repair

Reamer NOT Required to Transition from PVC to Liquidtite

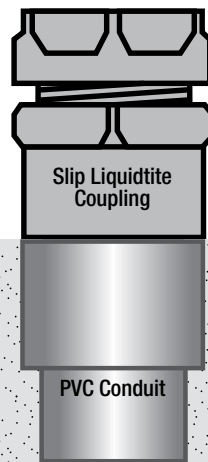
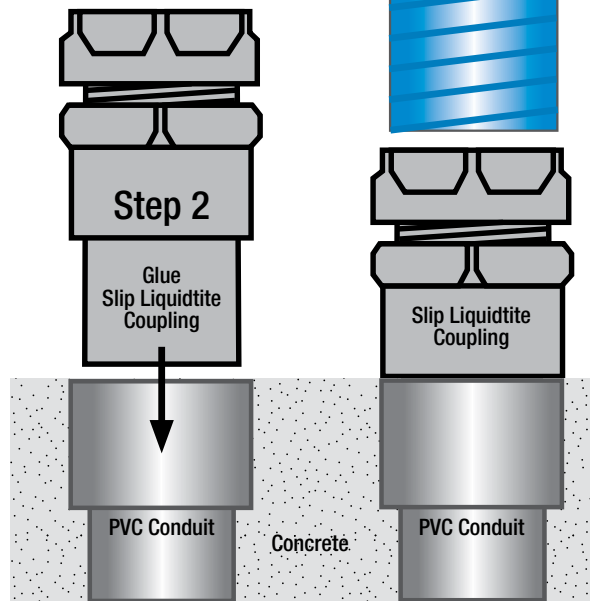
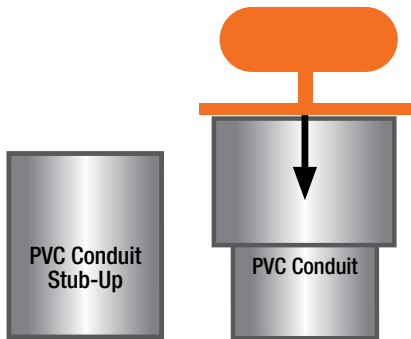
Apply PVC Cement to Secure & Complete



Step 3
Attach Liquidtite Conduit to Slip Liquidtite Coupling

1/2" thru 4"

Step 1
Install PVC Coupling on Conduit Flush or Just Below Grade and Cap with (Conduit Plug IP27c) or Tape Prior to Pour



Transition Couplings	
Size	Catalog #
1/2"	50 SLIP/LIQ
3/4"	75 SLIP/LIQ
1"	100 SLIP/LIQ
1-1/4"	125 SLIP/LIQ
1-1/2"	150 SLIP/LIQ
2"	200 SLIP/LIQ
2-1/2"	250 SLIP/LIQ
3"	300 SLIP/LIQ
3-1/2"	350 SLIP/LIQ
4"	400 SLIP/LIQ

All SP Products Inc. Transition Fittings are manufactured for installation to either meet or exceed in accordance with NEMA TC2, TC3 or UL 651 specifications

Customer must satisfy all codes and owners' specifications.



PATENT PENDING
PATENTED

LABELS APPLY TO PRODUCTS ONLY WHERE SHOWN ABOVE



730 Pratt Boulevard • Elk Grove Village, IL 60007
P: (847) 593-8595 • F: (847) 593-8629 • Toll-free (800) 233-8595
E: info@spproducts.com • www.spproducts.com

IP12c