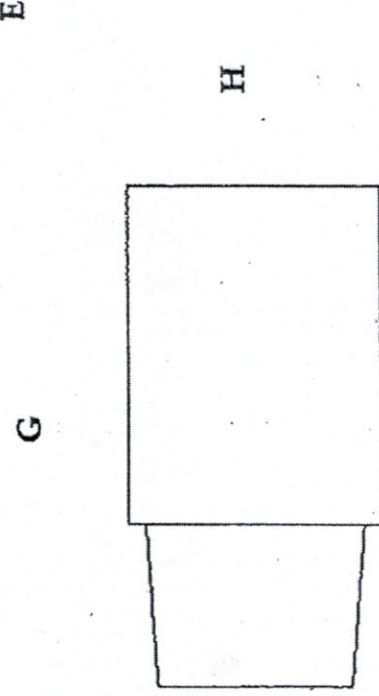
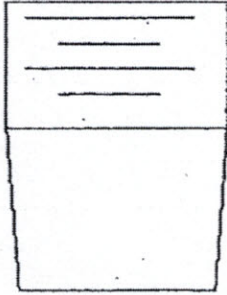
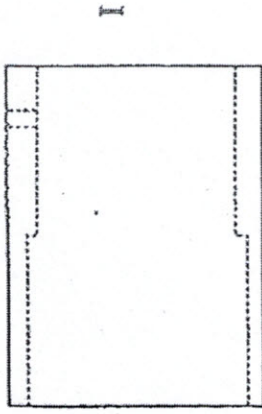


PVC TO EMT COUPLING

5/16-18 SET SCREW



A B C D E F G H I

S	A	B	C	D	E	F	G	H	I
3/4"	.925	.80	1.05	.955	1.635	3/4"NPT	2.435	1.25	.94
1"	1.165	.97	1.31	1.21	2.015	1"NPT	2.985	1.50	1.18
1-1/4"	1.50	1.04	1.66	1.51	2.05	1-1/4"NPT	3.09	1.875	1.525
1-1/2"	1.744	1.1	1.90	1.775	2.10	1-1/2"NPT	3.20	2.125	1.76
2"	2.219	1.1	2.375	2.25	2.56	2"NPT	3.66	2.625	2.23

Approved by _____

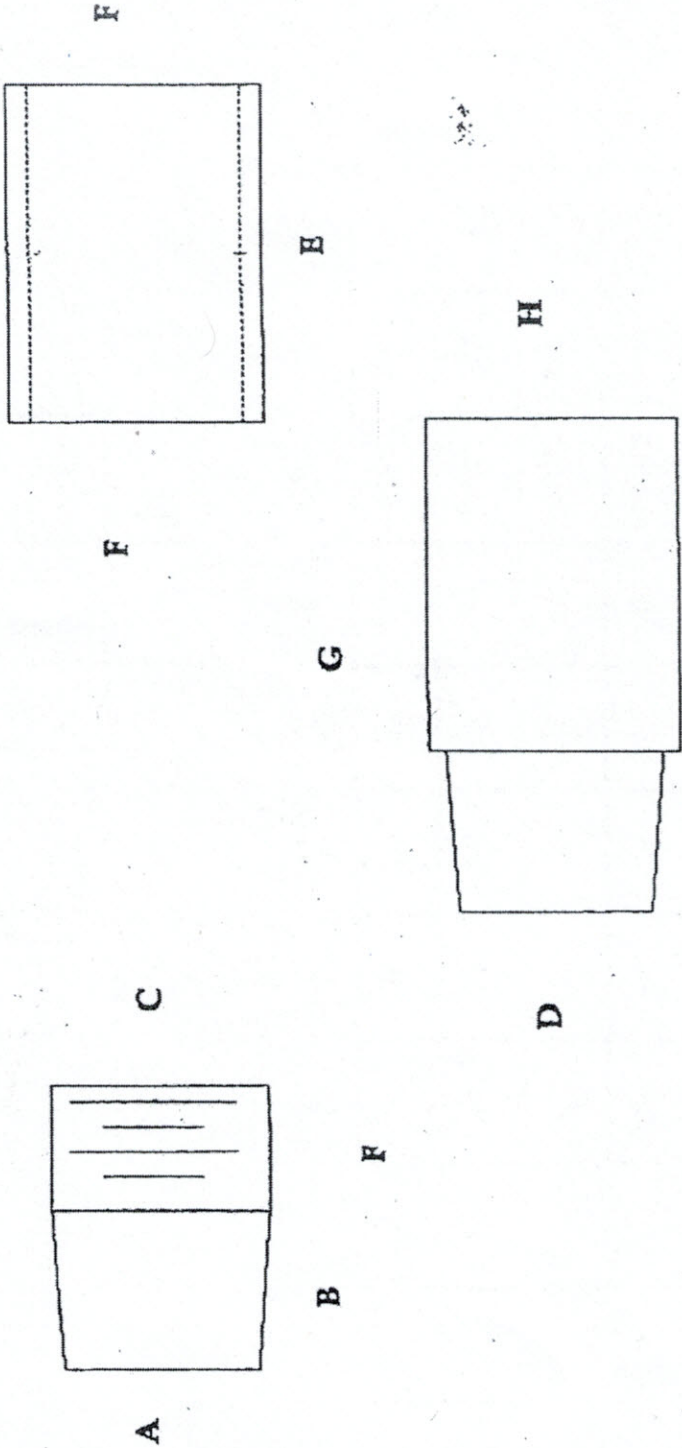
DATED _____



Productivity and Value from Above

1-800-233-8595 info@spproducts.com

PVC TO RIGID COUPLING



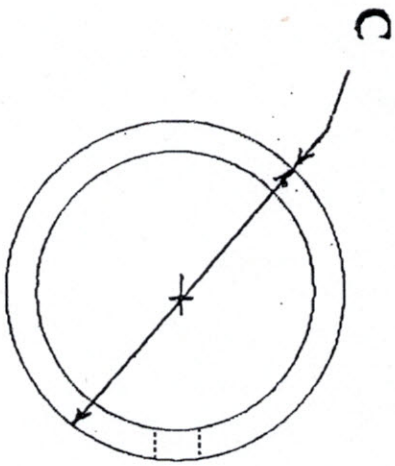
A B C D E F G H

S I Z E	A	B	C	D	E	F	G	H
3/4"	.925	.80	1.05	.955	1.638	3/4" NPT	2.435	1.25
1"	1.165	.97	1.31	1.21	2.015	1" NPT	2.985	1.52
1-1/4"	1.50	1.04	1.66	1.51	2.05	1-1/4" NPT	3.09	1.875
1-1/2"	1.744	1.1	1.90	1.775	2.10	1-1/2" NPT	3.20	2.125
2"	2.219	1.1	2.375	2.25	2.56	2" NPT	3.66	2.625

SP PRODUCTS, INC.
Productivity and Value Over Time
 1-800-233-8595 info@sproducts.com

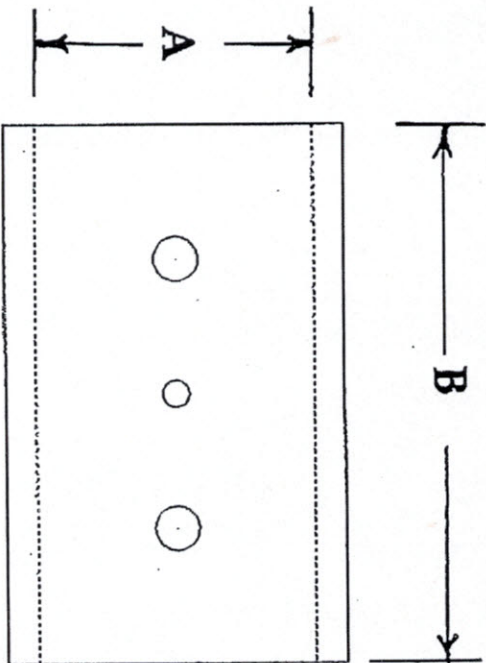
Approved by _____

DATED _____



5/16-24

A B C



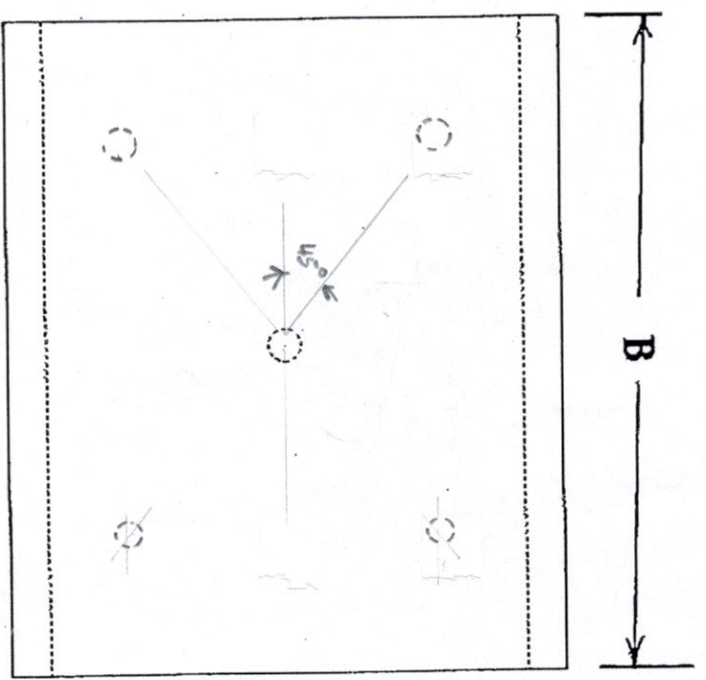
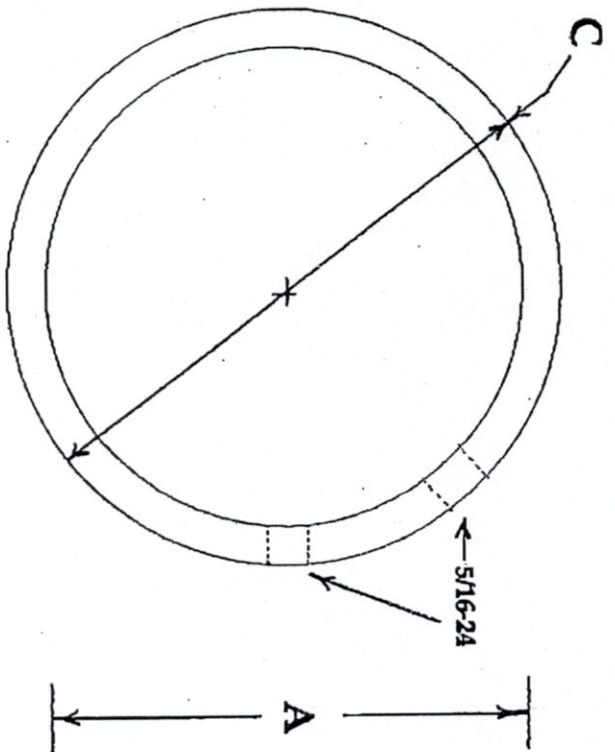
S	1/2"	.736	3.0	1.00
	3/4"	.952	3.0	1.1875
Z	1"	1.193	3.0	1.4375
	1-1/4"	1.54	3.0	1.875
R	1-1/2"	1.77	3.0	2.125

**1/2" THRU 1-1/2"
EMT TO EMT
COUPLING**

SP PRODUCTS, INC.
Productivity and Value the Same
1-800-233-8595 info@sproducts.com

Approved by _____

DATED _____



A B C

S	2"	2.23	4"	2.625
I	2-1/2"	2.905	4"	3.375
Z	3"	3.59	4"	4.0
R	3-1/2"	4.03	4"	4.5
	4"	4.53	4"	5.0

**2" THRU 4"
EMT TO EMT
COUPLING**

SP PRODUCTS, INC.
Producing and Selling the Best
 1-800-233-8595 info@spproducts.com

Approved by _____
 DATED _____