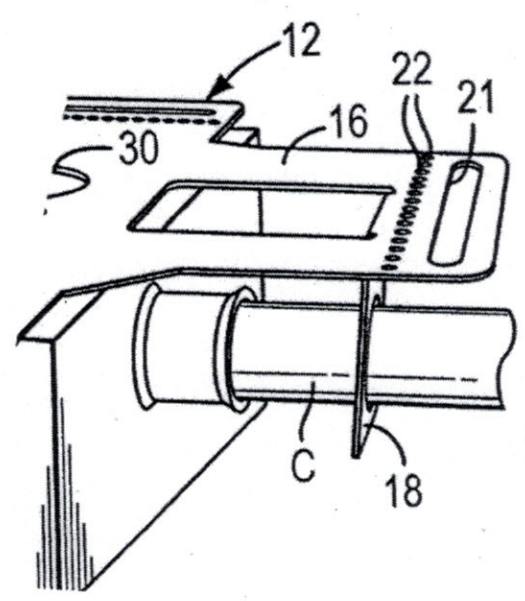
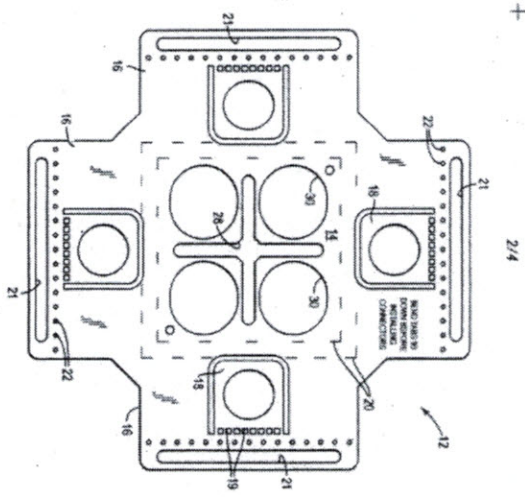
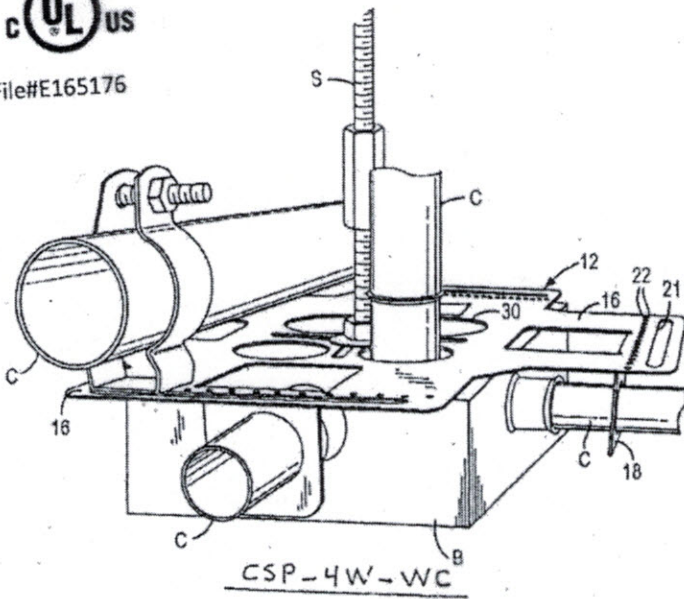




File#E165176



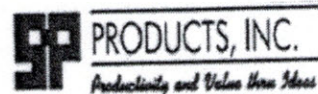
CSP-4W-WC Installation Procedures

- 1) Drop 1/4" or 3/8" or 1/2" threaded rod
On center of conduit support plate
and 4" sq, 4 11/16" or 5" box
- 2) Secure threaded rod and box with hex nut and washer
for either 1/4" ; 3/8" or 1/2" size being used.
- 3) Bend down 90 degree slitted tabs on each
CSP-4W-WC wing for 1/2" or 3/4" size conduit support.
- 4) Drop from above 1/2" or 3/4" size conduit or MC cable in either
4 oval holes on top of CSP-4W-WC .
- 5) You can trapeze auxiliary systems above CSP-4W-WC
from same threaded rod support up to 2" size conduit
securing them with clamps fastened thru 0.094"x15 holes
on each wing of CSP-4W-WC.
- 6) Scores of 4" square or 4 11/16" on face of CSP-4W-WC
Plate serve to align box at prefab shop.
- 7) Two diagonal holes 0.188" on each corner serve as fastening
location of box to plate

CSP-4W-WC Hardware material list	Qty
CSP-4W-WC	1
1/4-20 or 3/8-20 or 1/2-20" threaded rod	1
1/2" or 3/4" Conduit	4
1/4-20 or 3/8-20 or 1/2-20" hex nut	2
1/4-20 or 3/8-20 or 1/2-20" washer	2
4" square or 4 11/16" square box	1



Made in the U.S.A.



1-800-233-8595 info@spproducts.com