

# PVC End Bell Adapter

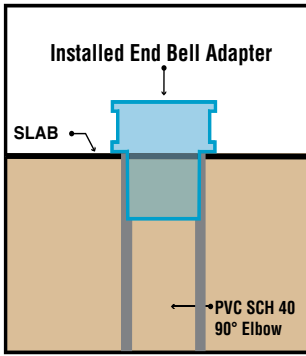


**Allows Faster Trouble Free Wire Pulls  
Use for Entire Job - Not Just for Repair**

**Stub Up, Cut Flush to Slab,  
Ream Out PVC, Glue in End Bell,  
Cap Conduit for a**

**Professional Looking Job!**

**Sizes 1/2" thru 6"  
PVC Sch 40/80**



Catalog #	Size
PEBA#50	1/2 inches
PEBA#75	3/4 inches
PEBA#100	1 inches
PEBA#125	1 1/4 inches
PEBA#150	1 1/2 inches
PEBA#200	2 inches
PEBA#250	2 1/2 inches
PEBA#300	3 inches
PEBA#350	3 1/2 inches
PEBA#400	4 inches
PEBA#500	5 inches
PEBA#600	6 inches



See Our  
REAMING BITS for  
Transition Couplings



See page IP15

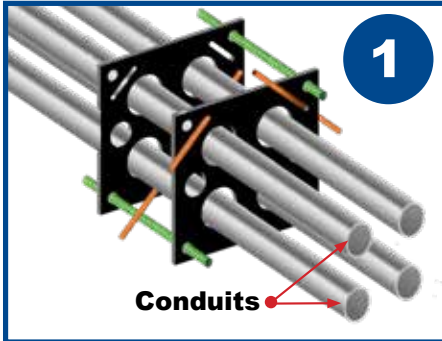


**Eliminate  
chipping away  
concrete to  
install End  
Bell**

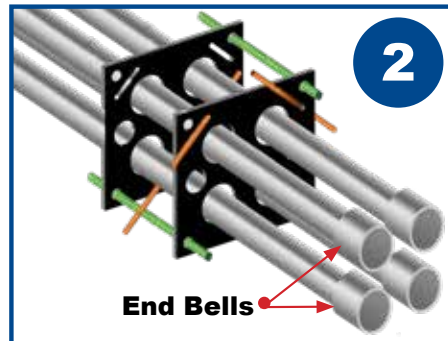


All Above Meet UL651  
CSA C22.2, No.85 and  
US Army Corps Engineers  
Specifications

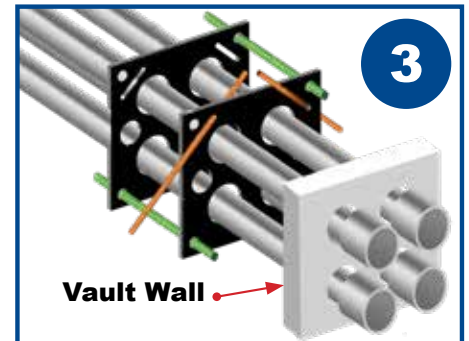
**Perfect for use with QwikDuct HDPE Templates for Railway, Highway & Tollway**



1. Align QwikDuct close to manhole or vault



2. Ream out conduits and glue on end bell adapters to each conduit inside or outside manhole or vault



3. Slide conduits with bell end adapters thru manhole openings inside or outside manhole or vault

**Customer must satisfy all codes and owners' specifications.**



PATENT PENDING  
PATENTED



LABELS APPLY TO PRODUCTS ONLY WHERE SHOWN ABOVE

730 Pratt Boulevard • Elk Grove Village, IL 60007  
P: (847) 593-8595 • F: (847) 593-8629 • Toll-free (800) 233-8595  
E: info@spproducts.com • www.spproducts.com

**IP14-14a**