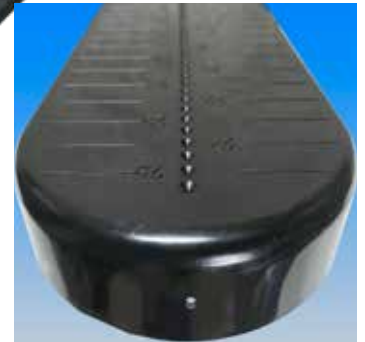


# Anchor Bolt Template

## Extremely Fast, Accurate Installation For Light Poles, Beams, etc.

Each Template  
Saves 100's of  
Dollars!



A 1/4" hole is provided  
on end of each wing  
upon request for fast and  
secure installation of the  
template to sonotube  
before the concrete pour

PATENTED  
Cat# EZ ABT-800

## Reusable for Many Jobs

- Rulers on all 4 wings allow drilling same bolt diameter holes for 5½ thru 25 inch four bolt circle patterns.
- Color code templates for each bolt diameter and drill different circle patterns from job to job.
- Embedded divots ensure accuracy when drilling.
- Deep recess in back allows leveling nut to be free of concrete.
- Strong extremely long-lasting non-corrosive ABS plastic.

## Eliminate constantly purchasing and fabricating expensive plywood.

Customer must satisfy all codes and owners' specifications.

**SP** PRODUCTS, INC  
Productivity and value thru ideas



PATENT PENDING  
PATENTED



LABELS APPLY TO PRODUCTS ONLY WHERE SHOWN ABOVE

730 Pratt Boulevard • Elk Grove Village, IL 60007  
P: (847) 593-8595 • F: (847) 593-8629 • Toll-free (800) 233-8595  
E: info@spproducts.com • www.spproducts.com

TELL